








Lebensraumtypen- und §62-Biotop-Karte

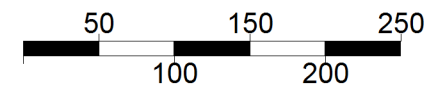
DE-3708-303 „Rüenberger Venn“

Stand: 20.04.2005

Legende

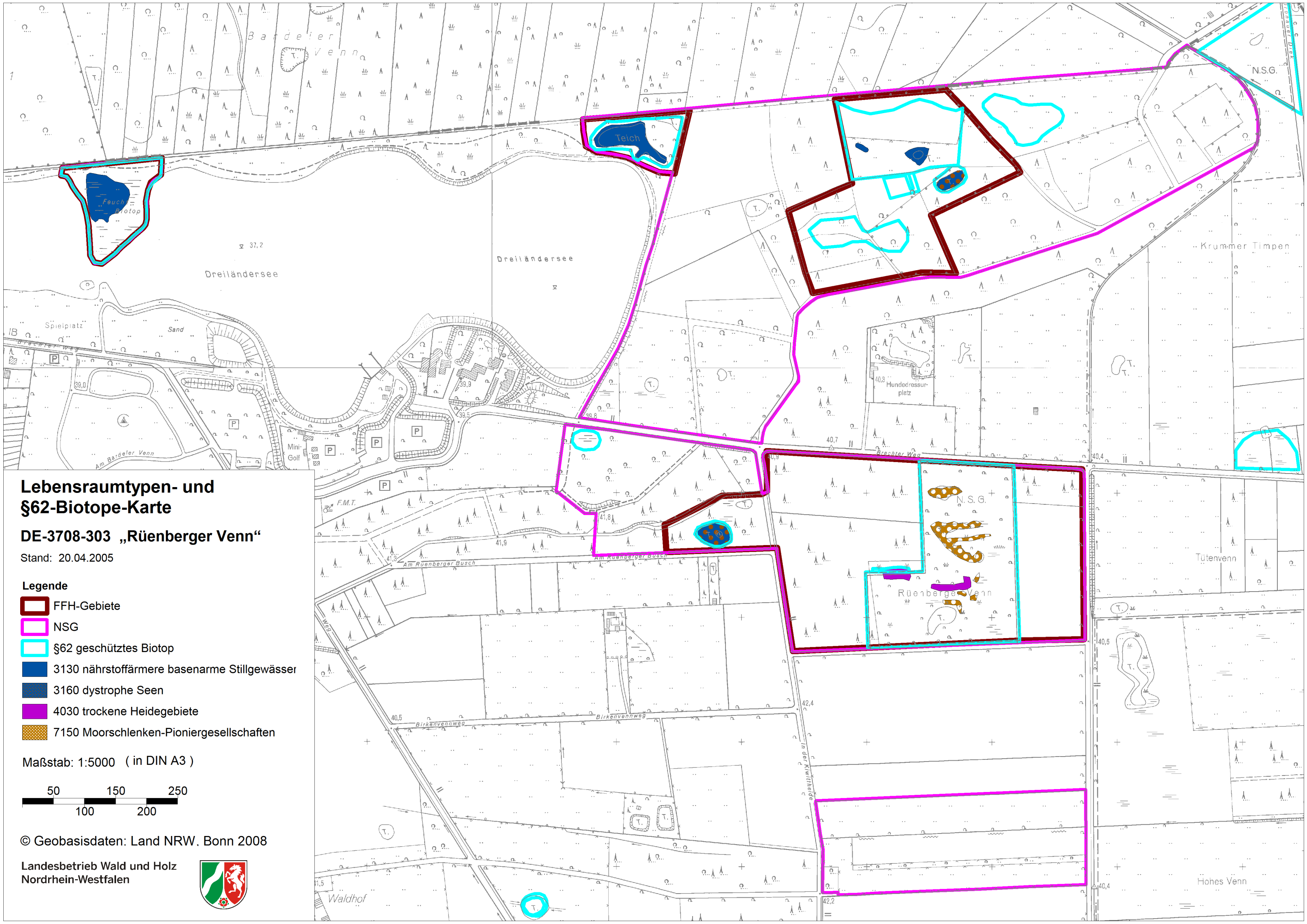
-  FFH-Gebiete
-  NSG
-  §62 geschütztes Biotop
-  3130 nährstoffärmere basenarme Stillgewässer
-  3160 dystrophe Seen
-  4030 trockene Heidegebiete
-  7150 Moorschlenken-Pioniergesellschaften

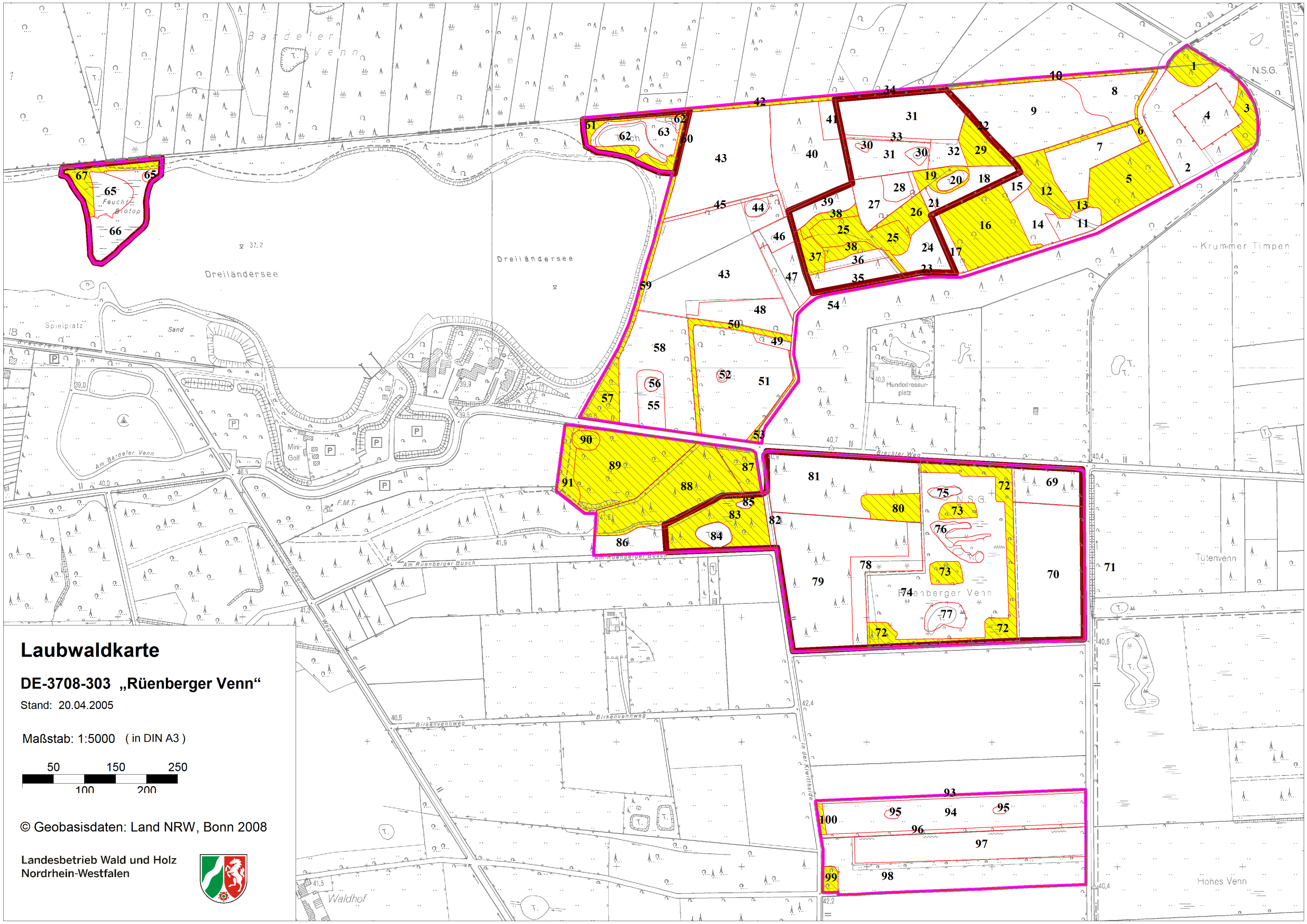
Maßstab: 1:5000 (in DIN A3)



© Geobasisdaten: Land NRW, Bonn 2008

Landesbetrieb Wald und Holz
Nordrhein-Westfalen



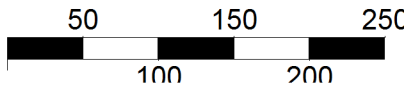


Laubwaldkarte

DE-3708-303 „Rüenberger Venn“

Stand: 20.04.2005

Maßstab: 1:5000 (in DIN A3)



© Geobasisdaten: Land NRW, Bonn 2008

Landesbetrieb Wald und Holz
Nordrhein-Westfalen

